

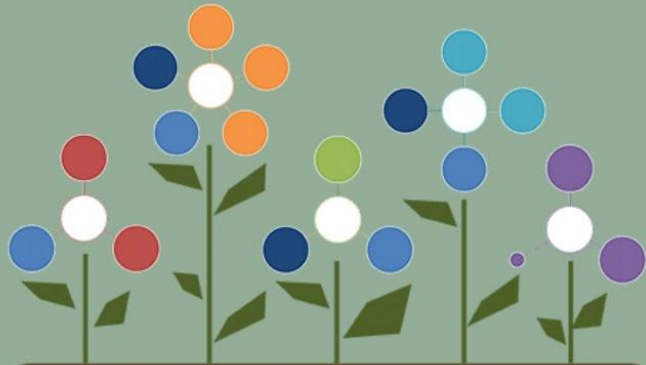


WELCOME

**PARTNERSHIP FOR
A HEALTHY
COMMUNITY**

2020 ANNUAL MEETING





**Partnership for a
Healthy Community**

healthyhoi.org

**Annual Meeting
March 22, 2021**

2021 Board Members

Lisa Fuller, Co-Chair
OSF HealthCare Saint Francis
Medical Center

Tim Heth, Vice-Chair
UnityPoint Health

Hillary Aggert
Woodford County Health
Department

Holly Bill
Hult Center for Healthy Living

Beth Crider
Peoria Regional Office of Education

Greg Eberle
Hopedale Medical Complex

Kate Green
Continuum of Care

Joel Shoemaker
IL Prairie District Public Library

Larry Weinzimmer
Bradley University

Monica Hendrickson, Co-Chair
Peoria City/County Health Department

Amy Fox, Secretary
Tazewell County Health Department

Chris Setti
Greater Peoria Economic Development
Council

Ann Campen
Tazewood Center for Wellness

Len Ealey
Pekin Public School District

Sally Gambacorta
Carle Eureka Hospital

Tricia Larson
Tazewell County Board of Health

Adam Sturdavant
OSF Medical Group - Pediatrics

Jennifer Zammuto
Heart of IL United Way

A person with dark hair is seen from the side, looking upwards towards a large tree with green leaves. The scene is outdoors, likely in a park or natural setting. The image has a dark, semi-transparent overlay.

MENTAL HEALTH

A close-up portrait of a woman with long, wavy white hair. She is smiling slightly and looking off to the side. The background is a soft-focus outdoor setting. The image has a dark, semi-transparent overlay.

CANCER

A close-up shot of a person's back and shoulder, showing their hair and skin. The lighting is soft and natural. The image has a dark, semi-transparent overlay.

SUBSTANCE USE

A top-down view of a large, shallow bowl filled with a variety of fresh, colorful ingredients. It includes sliced red bell peppers, green olives, diced carrots, white rice, dark beans, sliced radishes, and leafy greens. The bowl is placed on a wooden surface. The image has a dark, semi-transparent overlay.

HEALTHY EATING
ACTIVE LIVING



2020-2022 CHIP

MENTAL HEALTH

Tim Bromley, Co-Chair





**IMPROVE MENTAL HEALTH
AMONG TRI-COUNTY
RESIDENTS THROUGH
PREVENTATIVE STRATEGIES
AND INCREASED ACCESS TO
SERVICES.**



MENTAL HEALTH ACTION TEAM GOAL



THE INTERVENTIONS

INCREASE
KNOWLEDGE
OF MENTAL
HEALTH AND
REDUCE
STIGMA

UNIVERSAL
SCHOOL-
BASED
SUICIDE
AWARENESS &
EDUCATION

SCHOOL-
BASED SOCIAL
EMOTIONAL
INSTRUCTIONS

BEHAVIORAL
HEALTH
PRIMARY
CARE
INTEGRATION

2020 SUCCESSES

INCREASED
VIRTUAL
HEALTH
EDUCATION,
ACCESS TO
BEHAVIORAL
HEALTH CARE,
& VIRTUAL
HEALTHCARE
COVERAGE
ADVOCACY

MENTAL
HEALTH FIRST
AID CADRE
FORMED

2,025 TRI-
COUNTY
RESIDENTS
NOW MENTAL
HEALTH FIRST
AID CERTIFIED

INCREASED
BEHAVIORAL
HEALTH
PRIMARY
CARE
INTEGRATION




2020-2022 CHIP

SUBSTANCE USE

Holly Bill, Co-Chair





**REDUCE SUBSTANCE USE TO
PROTECT THE HEALTH,
SAFETY AND QUALITY OF
LIFE FOR TRI-COUNTY
RESIDENTS.**



SUBSTANCE USE ACTION TEAM GOAL





THE INTERVENTIONS

CRIMINAL
JUSTICE
STRATEGIES

HARM
REDUCTION
EFFORTS

TECHNOLOGY-
ENHANCED
CLASSROOM
INSTRUCTION

MASS MEDIA
CAMPAIGNS

YOUTH
LEADERSHIP



2020 SUCCESSES

NEW ONLINE
OPIOID HUB

INCREASED
NARCAN
DISTRIBUTION

716 STUDENTS
PARTICIPATED
IN VIRTUAL
HEALTH
EDUCATION

MASS MEDIA
CAMPAIGNS
CREATED

CERTIFIED
PEER
EDUCATOR
TRAINING
AVAILABLE
TO HIGH
SCHOOL
STUDENTS




2020-2022 CHIP

**HEALTHY
EATING &
ACTIVE
LIVING**

Shanita Wallace, Co-Chair
Kaitlyn Streitmatter, Co-Chair





**TO FOSTER AND PROMOTE
HEALTHY EATING AND
ACTIVE LIVING TO REDUCE
CHRONIC DISEASE AND
FOOD INSECURITY IN THE
TRI-COUNTY AREA.**



HEAL ACTION TEAM GOAL





THE INTERVENTIONS

ADULT-FOCUSED

Community-based social support for physical activity

National Diabetes Prevention Program

YOUTH-FOCUSED

Breastfeeding promotion

Family-based physical activity

Screen-time intervention

Multi-component obesity prevention

FOOD INSECURITY

Food insecurity screenings

Create multi-sector partnerships and networks

2020 SUCCESSES

ADULT-FOCUSED

57 individuals with pre-diabetes enrolled in year-long program

407 pounds lost!

YOUTH-FOCUSED

22 Lactation Consultants trained in tri-county

Increased family-based physical activity

Increased screen-time interventions

Increased youth obesity prevention

FOOD INSECURITY

HEAL Food System Partners

Food Pantry Network

12 Mobile Pantries

Grow a Row
5 Gardens &
18,626 pounds



2020-2022 CHIP

CANCER

Tom Cox, Co-Chair

Diane Hahn, Co-Chair

Andrea Ingwerson, Co-Chair





**REDUCE THE ILLNESS,
DISABILITY AND DEATH
CAUSED BY LUNG, BREAST
AND COLORECTAL CANCER
IN THE TRI-COUNTY AREA.**

CANCER ACTION TEAM GOAL



THE INTERVENTIONS

BREAST CANCER

Increase breast cancer screening

COLORECTAL CANCER

Increase colorectal screening

Multicomponent interventions

Provider Assessment and Feedback

LUNG CANCER

Reduce tobacco use

Reduce initiation of tobacco use among youth

Radon mitigation

Increase lung cancer low dose CT screening

2020 SUCCESSES

BREAST CANCER

Breast cancer
screening promotion &
collaboration

COLORECTAL CANCER

Colorectal screening
promotion &
collaboration

LUNG CANCER

Reduced tobacco use
among Peoria
residents

Increased radon
mitigation efforts

19 smoke-free policies
passed through Illinois
Tobacco-Free
Communities

Increased lung cancer
low dose CT screening



REPRODUCTIVE HEALTH

Ashwin Siddaraju, Committee Member





IMPROVE AND PROMOTE REPRODUCTIVE AND SEXUAL HEALTH OF ADOLESCENTS AND YOUNG ADULTS.



REPRODUCTIVE HEALTH ACTION TEAM
PERFORMANCE MANAGEMENT





THE INTERVENTIONS

SCHOOLS

Comprehensive Sexual
Health Education

Outreach and
Engagement

PROVIDERS

5 P's

Expedited
Partner Therapy

LGBTQ+ and PrEP
Education

BIRTH OUTCOMES

Centering Pregnancy

Home Visiting

Preconception Care

2020 SUCCESSES

SCHOOLS

Increased Virtual
Comprehensive Sexual
Health Education

Increased Outreach
and Engagement
Efforts

PROVIDERS

Continuation of 5 P's

Expedited
Partner Therapy

Increased LGBTQ+ and
PrEP Education

BIRTH OUTCOMES

52 participants
participated in
Centering Pregnancy

89.4% Singleton
Births at Fullterm
Births



WELCOME

PARTNERSHIP FOR A HEALTHY COMMUNITY

Lisa Fuller, Co-Chair

Monica Hendrickson, Co-Chair



Community Health Needs Assessment

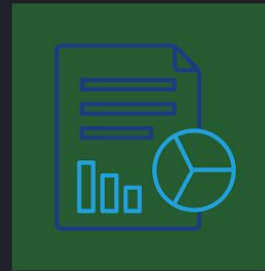
What to Expect



Governance



Alignment



Data



Accountability

VISIT OUR WEBSITE

www.healthyhoi.org

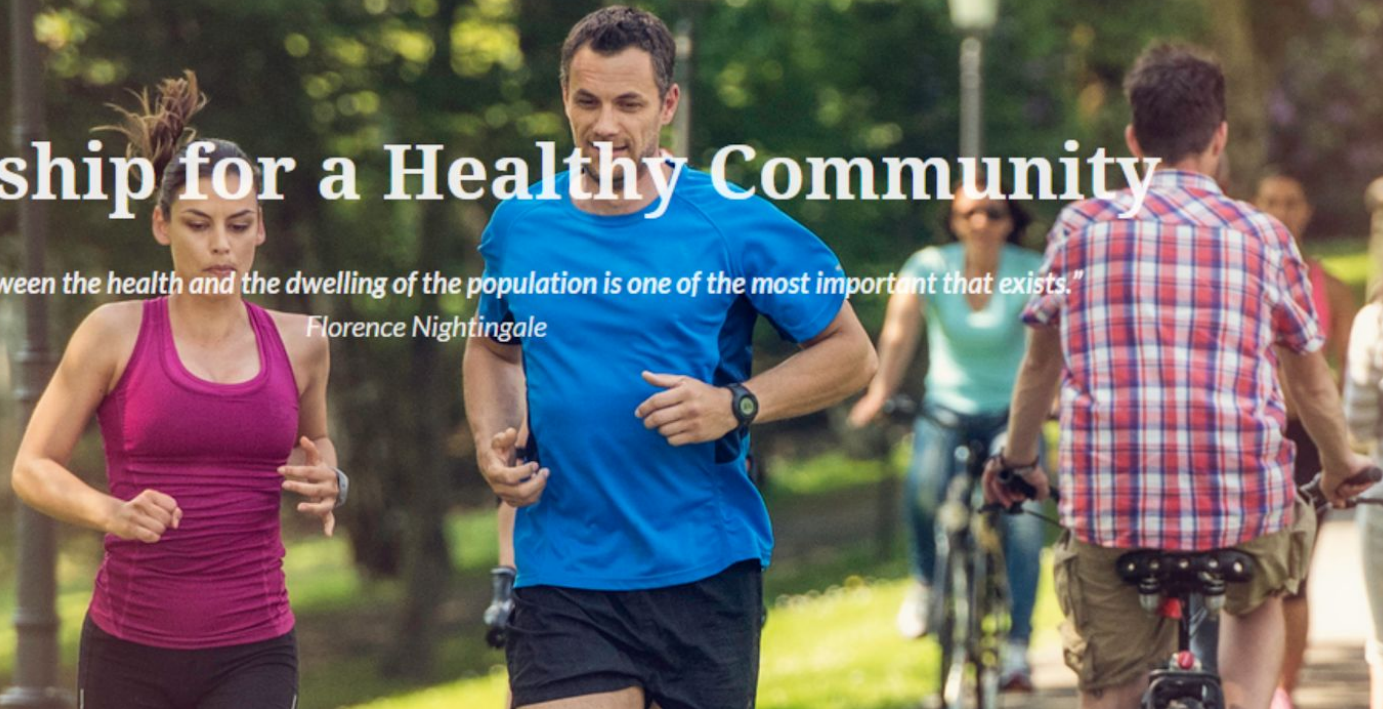


[HOME](#) [ABOUT >](#) [PROCESS >](#) [PRIORITIES >](#) [PROGRAMS >](#) [PERFORMANCE MANAGEMENT >](#) [CALENDAR](#) [DISCUSSIONS >](#) [CONTACT](#)

Partnership for a Healthy Community

"The connection between the health and the dwelling of the population is one of the most important that exists."

Florence Nightingale





Partnership for a
Healthy Community
healthyhoi.org

Q&A

PARTNERSHIP FOR A HEALTHY
COMMUNITY



THANK YOU

**PARTNERSHIP FOR A HEALTHY
COMMUNITY**